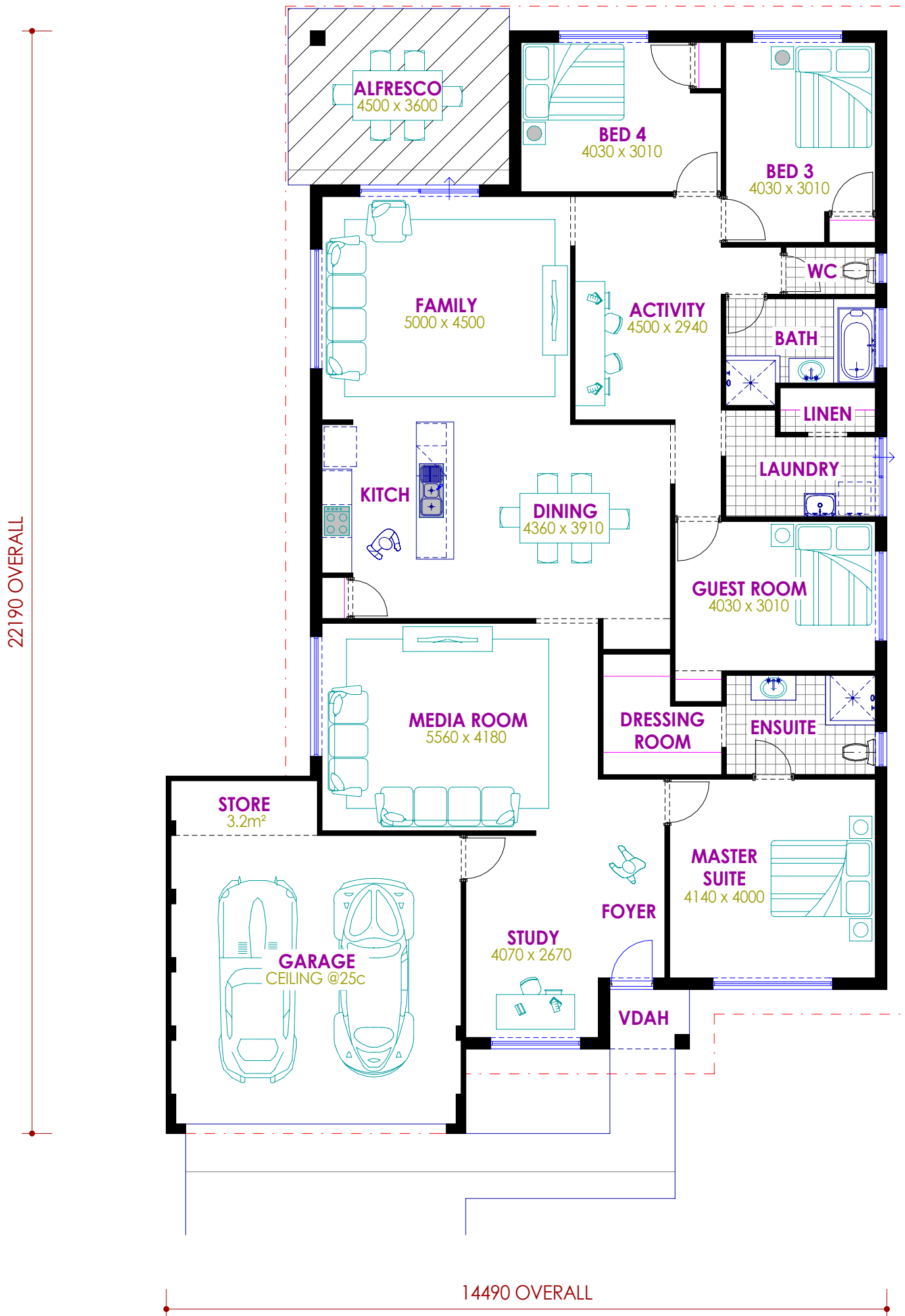


THE 'Chili'



GROUND FLOOR - 205.21m² (64.16m PER)
 ALFRESCO - 16.20m²
 VDAH - 1.92m²
 GARAGE-STORE - 39.34m²
TOTAL - 262.67m²



Unit 15/288 Amherst Rd, Canning Vale WA 6155
 t: 08 9256 4600 f: 08 9256 4611 w: taurushomes.com.au

ACN 114205346
 Builders Registration No. 11825